

# 352

## HYDRAULIC EXCAVATOR



---

**Engine Power**  
**Operating Weight**

302 kW (405 hp)  
49 900 kg (110,000 lb)

Cat® C13 Engine meets China Nonroad Stage III emission standards, equivalent to U.S. EPA Tier 3 and EU Stage IIIA.



## NEXT GENERATION EXCAVATORS

Cat excavators are designed with a new approach to equipment families that gives you:

- + OPTIMAL PERFORMANCE
- + ENHANCED COMFORT
- + HIGH DURABILITY

Ready to help you make your business stronger, Cat excavators give you new ways to get the most work done at the lowest cost, so you put more money in your pocket.



# THE NEW CAT<sup>®</sup> 352

MOVING THE STANDARD HIGHER

The **Cat 352** gives you high hydraulic power and durability to tackle any big job with large attachments for greater payload capacity. Long maintenance intervals and low fuel consumption help you cut costs without sacrificing production.



---

## MORE PRODUCTION

High hydraulic power and large attachments push your productivity levels up.

---

## LOW OWNING AND OPERATING COSTS

With industry-leading fuel efficiency and long life for fuel, oil, and air filters, you can control your overall costs.

---

## HIGH DURABILITY

Proven engine and reliable hydraulics bring you more durability to tackle big jobs with heavy-duty booms and sticks.

# CAT EQUIPMENT MANAGEMENT TECHNOLOGY TAKES THE GUESSWORK OUT OF MANAGING YOUR EQUIPMENT

---

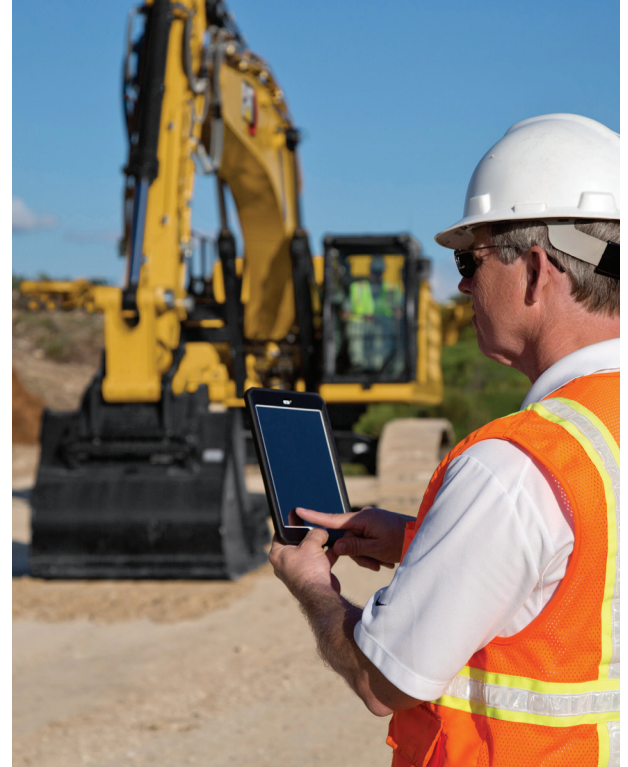
**Cat Equipment Management** telematics technology helps take the complexity out of managing your jobsites by gathering data generated by your equipment, materials and people and serving it up to you in customizable formats.

## **PRODUCT LINK™**

Product Link™ collects data automatically and accurately from your assets – any type and any brand. Information such as location, hours, fuel usage, productivity, idle time, maintenance alerts, diagnostic codes and machine health can be viewed online through web and mobile applications.

## **VISIONLINK®**

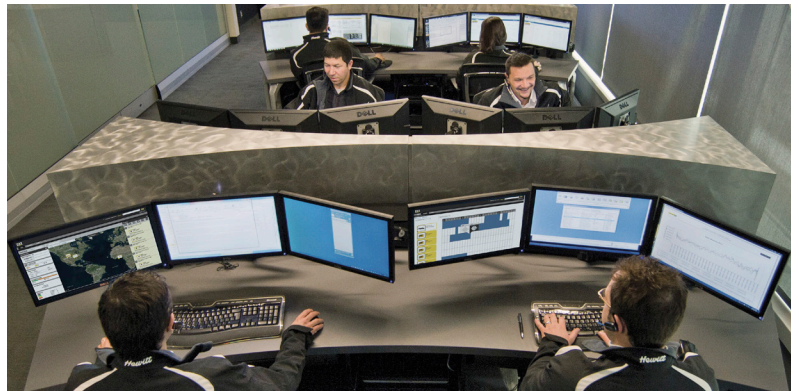
Access information anytime, anywhere with VisionLink® – and use it to make informed decisions that boost productivity, lower costs, simplify maintenance and improve safety and security on your jobsite. With different subscription level options, your Cat dealer can help you configure exactly what you need to connect your fleet and manage your business, without paying for extras you don't want. Subscriptions are available with cellular or satellite reporting (or both).



**Remote Services** is a suite of technologies that improves your jobsite efficiency.

**Remote Troubleshoot** allows your Cat dealer to perform diagnostic testing on your connected machine remotely, pinpointing potential issues while the machine is in operation. Remote Troubleshoot ensures the technician arrives with the correct parts and tools the first time, eliminating additional trips to save you time and money.

**Remote Flash** updates on-board software without a technician being present, potentially reducing update time by as much as 50%. You can initiate the update when convenient, increasing your overall operating efficiency.



# CAB TAKES THE HARD OUT OF WORK

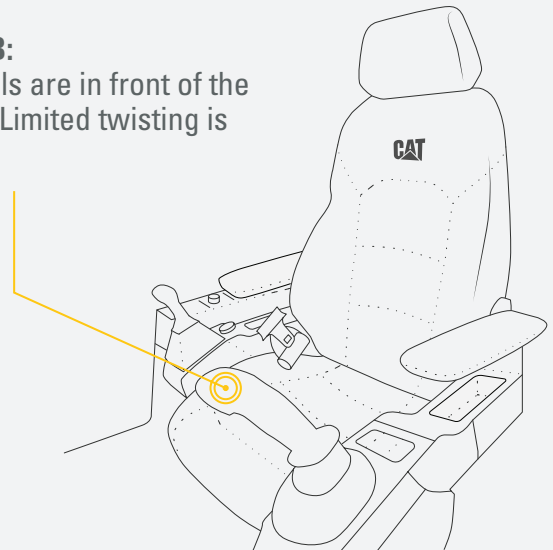
Sites where excavators typically work are rugged and challenging. That's why it's important that the 352 cab protects the operator as much as possible from the fatigue, stresses, sounds, and temperatures of the job.

## WE'VE GOT YOUR BACK.

**BACK PAIN IS ONE OF THE MOST COMMON REASONS PEOPLE MISS WORK.\***

### NEW CAB:

All controls are in front of the operator. Limited twisting is required.



ASSUME 1 TWIST PER HOUR  
1 TWIST × 8-HOUR WORKDAY = 8 TWISTS PER DAY  
8 TWISTS × 5 WORKDAYS PER WEEK = 40 TWISTS PER WEEK  
40 TWISTS × 52 WEEKS PER YEAR = **2,080 TWISTS PER YEAR**

\*SOURCE: [HTTPS://WWW.NINDS.NIH.GOV/DISORDERS/PATIENT-CAREGIVER-EDUCATION/FACT-SHEETS/LOW-BACK-PAIN-FACT-SHEET](https://www.ninds.nih.gov/disorders/patient-caregiver-education/fact-sheets/low-back-pain-fact-sheet)



## SEAT AND JOYSTICK CONSOLE REDUCE FATIGUE

Comfort and efficiency of movement keep operators productive and alert all shift long. The standard seat is wide and adjustable for operators of virtually any size. The Deluxe cab offers heated seat and tip-up left console for easy entry and exit.



## TOUCHSCREEN MONITOR

Most machine settings can be controlled through the high-resolution touchscreen monitor. It offers 42 languages and is easy to reach from the seat with no twisting or turning.



## SMART MODE

Smart Mode (one of three power mode settings) automatically adjusts engine and hydraulic power for the highest fuel efficiency – less power for tasks such as swinging and more power for digging.



## CUSTOMIZABLE JOYSTICKS

Make moving the excavator much easier with Cat Stick Steer option. Simply push a button and use one hand to travel and turn instead of both hands or feet on levers or pedals. Joystick functions can be customized through the monitor and preferences are saved with your operator ID.



## KEYLESS PUSH START

The 352 uses a keyless push-to-start button. This adds security for the machine by using Operator ID codes to limit and track machine access. Codes can be entered manually via an optional Bluetooth® key fob.



## RELIABLE WITH **HIGH DURABILITY**

In addition to reinforced booms and sticks, a huge difference in overall Cat machine durability is the undercarriage. It is the link between the ground and upper body, and it absorbs many of the stresses between them. The 352 undercarriage is built with many heavy-duty reinforcements:

- + HEAVY-DUTY TRACK ROLLERS
- + HEAVY-DUTY TRACK LINK
- + HEAVY-DUTY FINAL DRIVES
- + HEAVY-DUTY TRAVEL MOTOR GUARDS
- + HEAVY-DUTY RECOIL SPRINGS
- + HEAVY-DUTY SWIVEL AND SWIVEL GUARD

Add in a reinforced swing frame and counterweight support and you have an excavator that will stand up well in tough quarry and mining applications.

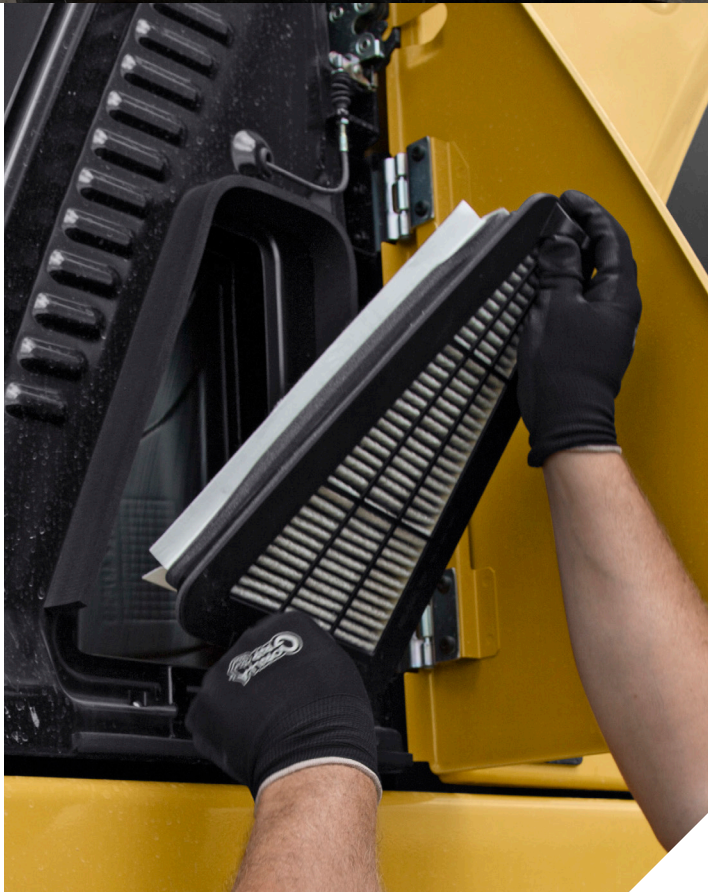




With extended maintenance intervals, you get more done at a lower cost. Consolidated filter locations make service faster. Hydraulic, air, and fuel tank filters have increased capacity and longer life.

**KEY MAINTENANCE COST REDUCTIONS INCLUDE:**

- + Consolidated filter locations to reduce service time.
- + Oil and fuel filters with extended maintenance intervals.
- + Hydraulic filter with higher dirt holding capacity.
- + Cat air filter with double the dust holding capacity of the previous filter.





# INCREASE YOUR PRODUCTIVITY AND PROFIT WITH CAT ATTACHMENTS

You can easily expand the performance of your machine by utilizing any of the variety of Cat attachments. Each Cat attachment is designed to fit the weight and horsepower of Cat excavators for improved performance, safety, and stability.

Attachments may vary. Consult your Cat dealer for details.

### BUCKETS



### GRAPPLES



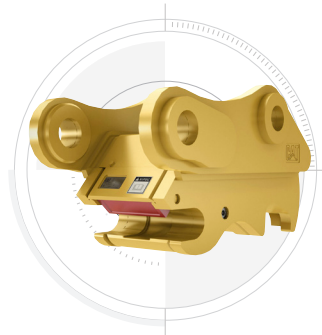
### HYDRAULIC HAMMERS



### MULTI-PROCESSORS



### QUICK COUPLERS



### SECONDARY PULVERIZERS



### SHEARS



### ORANGE PEEL GRAPPLE



# TECHNICAL SPECIFICATIONS

See *cat.com* for complete specifications.

ENGINE		
Engine Model	C13	
Emissions	China Nonroad Stage III emission standards, equivalent to U.S. EPA Tier 3 and EU Stage IIIA.	
Net Power (ISO 9249:2014)	302 kW	405 hp
Engine Power (ISO 14396:2002)	303 kW	406 hp
Bore	130 mm	5 in
Stroke	157 mm	6 in
Displacement	12.5 L	763 in <sup>3</sup>
<ul style="list-style-type: none"> <li>• Net power advertised is the power available at the flywheel when the engine is equipped with fan, air cleaner, muffler, and alternator.</li> <li>• Rating at 1,800 rpm.</li> </ul>		
HYDRAULIC SYSTEM		
Main System – Maximum Flow – Implement	779 L/min	206 gal/min
Maximum Pressure – Equipment – Implement	35,000 kPa	5,076 psi
Maximum Pressure – Equipment – Lift Mode	38,000 kPa	5,511 psi
Maximum Pressure – Travel	35,000 kPa	5,076 psi
Maximum Pressure – Swing	26,000 kPa	3,771 psi
SWING MECHANISM		
Swing Speed	8.3 rpm	
Maximum Swing Torque	189 kN·m	139,000 lbf·ft
WEIGHTS		
Operating Weights*	49 900 kg	110,000 lb
* Mass boom, HD M3.0UB (9'10") stick, SD 3.4 m <sup>3</sup> (4.45 yd <sup>3</sup> ) bucket, and 600 mm (24") double grouser shoes.		
SERVICE REFILL CAPACITIES		
Fuel Tank Capacity	715 L	188.9 gal
Cooling System	52 L	13.7 gal
Engine Oil (with filter)	40 L	10.6 gal
Swing Drive (each)	10.5 L	2.8 gal
Final Drive (each)	9.5 L	2.5 gal
Hydraulic System (including tank)	550 L	145.3 gal
Hydraulic Tank	217 L	57.3 gal

DIMENSIONS		
<b>Boom</b>	<b>Mass Boom 6.55 m (21'6")</b>	
<b>Stick</b>	<b>Mass Stick M3.0 (9'10")</b>	
<b>Bucket</b>	<b>SD 3.21 m<sup>3</sup> (4.2 yd<sup>3</sup>)</b>	
Shipping Height	4040 mm	10'3"
Handrail Height	3370 mm	11'1"
Shipping Length	11 580 mm	38'0"
Tail Swing Radius	3760 mm	12'4"
Counterweight Clearance	1280 mm	4'2"
Ground Clearance	475 mm	1'7"
Track Length	5370 mm	17'7"
Length to Center of Rollers	4360 mm	14'4"
Track Gauge	2740 mm	9'0"
Transport Width – 600 mm (24") Shoes	3530 mm	11'7"
WORKING RANGES AND FORCES		
<b>Boom</b>	<b>Mass Boom 6.55 m (21'6")</b>	
<b>Stick</b>	<b>Mass Stick M3.0 (9'10")</b>	
<b>Bucket</b>	<b>SD 3.21 m<sup>3</sup> (4.2 yd<sup>3</sup>)</b>	
Maximum Digging Depth	7270 mm	23'10"
Maximum Reach at Ground Level	11 240 mm	36'11"
Maximum Cutting Height	10 290 mm	33'9"
Maximum Loading Height	6780 mm	22'3"
Minimum Loading Height	2610 mm	8'7"
Maximum Depth Cut for 2440 mm (8') Level Bottom	6790 mm	22'3"
Maximum Vertical Wall Digging Depth	4540 mm	14'11"
Bucket Digging Force (ISO)	293 kN	65,900 lbf
Stick Digging Force (ISO)	212 kN	47,700 lbf

# STANDARD & OPTIONAL EQUIPMENT

Standard and optional equipment may vary. Consult your Cat dealer for details.

CAB	STANDARD	OPTIONAL
High-resolution touchscreen monitor	•	
Heated seat with air-adjustable suspension (Deluxe only)	•	
Product Link™	•	
Cat® Stick Steer		•
ENGINE	STANDARD	OPTIONAL
Cold start block heaters		•
Power, Smart, and Eco modes	•	
Auto engine speed control	•	
Up to 4500 m (14,760 ft) altitude capability with derate	•	
52°C (126°F) high-ambient cooling	•	
Hydraulic reverse fan		•
-18°C (0°F) cold start capability	•	
-32°C (-25°F) cold start capability		•
Double element air filter with integrated pre-cleaner	•	
Remote disable	•	
HYDRAULIC SYSTEM	STANDARD	OPTIONAL
Boom and stick regeneration circuit	•	
Electronic main control valve	•	
Auto heavy lift mode		•
Auto dig boost		•
Auto hydraulic oil warmup	•	
Auto swing parking brake	•	
High performance hydraulic return filter	•	
Two-speed travel	•	
Combined two-way auxiliary circuit		•
Medium-pressure auxiliary circuit		•
Quick coupler circuit		•
UNDERCARRIAGE AND STRUCTURES	STANDARD	OPTIONAL
Fixed gauge (FG) undercarriage	•	
Towing eye on base frame	•	
9.8 mt (21,605 lb) counterweight		•
600 mm (24") double grouser, HD double grouser, triple grouser, HD triple grouser track shoes		•

BOOMS AND STICKS	STANDARD	OPTIONAL
6.55 m (21'6") Mass boom		•
6.9 m (22'8") Reach boom		•
2.5 m (8'2") Mass stick		•
2.9 m (9'6") Reach stick		•
3.0 m (9'10") Mass stick		•
3.35 m (11'0") Reach stick		•
3.9 m (12'10") Reach stick		•
ELECTRICAL SYSTEM	STANDARD	OPTIONAL
Maintenance-free 1,000 CCA batteries (x4)	•	
Centralized electrical disconnect switch	•	
LED lights	•	
Inlet air heater		•
Engine oil sensor		•
SERVICE AND MAINTENANCE	STANDARD	OPTIONAL
Grouped location of engine oil and fuel filters	•	
Scheduled Oil Sampling (S-O-S <sup>SM</sup> ) ports	•	
Electric refueling pump with auto shutoff		•
SAFETY AND SECURITY	STANDARD	OPTIONAL
Service platform with anti-skid plate and recessed bolts	•	
Rearview and right-hand-sideview cameras <sup>1</sup>	•	
360° visibility		•

<sup>1</sup> Right-hand-sideview camera optional for China.

**Not all features are available in all regions. Please check with your local Cat dealer for specific offering availability in your area.**

For additional information, refer to the Technical Specifications brochure for the 352 model available at [www.cat.com](http://www.cat.com) or your Cat dealer.

For more complete information on Cat products, dealer services and industry solutions, visit us on the web at [www.cat.com](http://www.cat.com)

© 2021 Caterpillar. All Rights Reserved.

VisionLink is a trademark of VirtualSite Solutions LLC, registered in the United States and in other countries.

Materials and specifications are subject to change without notice. Featured machines in photos may include additional equipment. See your Cat dealer for available options.

CAT, CATERPILLAR, LET'S DO THE WORK, their respective logos, Product Link, S•O•S, "Caterpillar Corporate Yellow", the "Power Edge" and Cat "Modern Hex" trade dress as well as corporate and product identity used herein, are trademarks of Caterpillar and may not be used without permission.  
[www.cat.com](http://www.cat.com) [www.caterpillar.com](http://www.caterpillar.com)

AEXQ3323-00  
Build Number: 08A  
(Afr-ME, China, CIS,  
Indonesia, S Am)

