

374

HYDRAULIC EXCAVATOR



Engine Power (ISO 14396)
Operating Weight

359 kW (481 hp)
74 000 kg (163,100 lb)

Cat® C15 meets Brazil MAR-1 emission standards, equivalent to U.S. EPA Tier 3 and EU Stage IIIA.



NEXT GENERATION EXCAVATORS

Cat Next Generation Excavators offer you more choices than ever for your business.

- + MORE MODEL OPTIONS
- + MORE STANDARD TECHNOLOGIES
- + MORE PRICE POINTS

Cat Next Generation Excavators give you new ways to get the most work done at the lowest cost so you can keep more of your hard-earned money.



THE NEW CAT[®] 374

SETS A NEW STANDARD

High production. More durability. Less maintenance. The new Cat 374 excavator gives you those and so much more. With standard Cat Payload to show you how much material you are moving, up to two times more built-in structural durability to take on your most demanding work, and up to 20 percent less maintenance costs to keep more money in your pocket, the 374 excavator is simply the best choice in its size class to make your business more profitable.



LOAD **33** TRUCKS IN



INPUT		OUTPUT	
Model	374 NGH	Number of passes per truck	5
Bucket size (m ³)	5	Time to load 1 truck w/o exchange (sec)	100
Material density (metric ton/m ³)	1.6	Time to load 1 truck with exchange (sec)	110
Fill factor	100%	# Of trucks per hour	33
Truck payload (metric ton)	40	# Of trucks per shift (8 hours)	264
Cycle time/bucket (sec)	20		
Truck exchange time (sec)	10		

LOAD MORE TRUCKS

QUICKLY AND EFFICIENTLY

With 100 percent jobsite efficiency, you can expect to load up to 33 trucks per hour with the 374.* And you can validate your production in real time with Cat Payload, offered exclusively from Caterpillar as standard equipment.

A FINE PAIR

Caterpillar offers several trucks suitable for loading with the 374, and one of the best is the Cat 772. This truck has been handling the work of mines and quarries for over 40 years. The latest Cat G Series truck shown above is more efficient than ever, and several body options and the available Truck Production Management System make it even better.

* Mass front, 5.0 m³/6.5 yd³ bucket, 1.6 m³ material density, 100 percent fill factor, 100 percent jobsite efficiency.

HYDROSTATIC SWING: YOUR COMPETITIVE ADVANTAGE



THE NEW DEDICATED HYDROSTATIC SWING CIRCUIT FROM CATERPILLAR GIVES YOU TWO PRIMARY BENEFITS: HIGH PRODUCTIVITY WITH LOWER OPERATING COSTS.

The exclusive hydrostatic swing circuit has a dedicated bi-directional swing pump, swing motors, charge pump, and charge accumulator. The swing pump supplies oil to the swing motor; the charge pump and charge accumulator prevent cavitation (air bubbles) and overheating. The circuit enables regeneration of swing brake energy and independent management of cylinder oil flow, resulting in higher efficiency and smoother, more predictable performance when you multitask with the excavator.

DO JOBS FASTER

WITH CAT TECHNOLOGY



STANDARD TECHNOLOGIES:



CAT PAYLOAD

Cat Payload technology delivers precise load targets with on-the-go weighing, which helps prevent over/underloading and maximizes efficiency. Automated tracking helps you manage production and lower costs. You can even take payload data with you. The monitor's USB port lets you download results from one shift all the way up to 30 days of work so you can monitor progress without an internet connection or VisionLink® subscription.



CAT GRADE WITH 2D

Cat Grade with 2D helps operators reach grade faster. Operators can cut and fill to exact specifications without overcutting. No grade checkers are needed, which makes the work area safer.

AVAILABLE OPTIONAL UPGRADES

Cat Grade with Advanced 2D and Cat Grade with 3D increase productivity and expand grading capabilities.

Grade with Advanced 2D adds in-field design capabilities through an additional 254 mm (10-inch) high-resolution touchscreen monitor.

Grade with 3D adds GPS and GLONASS positioning for pinpoint accuracy. Plus, it's easier than ever to connect to 3D services like Trimble Connected Community or Virtual Reference Station with the excavator's built-in communication technology.

All Cat Grade systems are compatible with radios and base stations from Trimble, Topcon, and Leica. Already invested in a grade infrastructure? You can install grade systems from Trimble, Topcon, and Leica onto the machine.

GET MUSCLE WHERE IT MATTERS

FOR LONGER SERVICE LIFE



NO MATTER HOW HARD THE WORK, THE 374 WILL CUT THROUGH AND DELIVER.

In fact, the boom, stick, and frame are up to two times stronger than those on the previous model – all to give you reliable performance for the life of your machine.

REINFORCED BOOM, STICK & FRAME

- + INCREASED BOOM TOP AND BOTTOM PLATE THICKNESS
- + REDESIGNED BOOM NOSE BRACKET AND BAFFLE PLATE
- + INCREASED STICK SIDE, BOTTOM, AND BRACKET PLATE THICKNESS
- + INCREASED BASE FRAME AND COUNTERWEIGHT MOUNTING PLATE THICKNESS

MORE REINFORCEMENTS

Cylinder rods are upgraded for enhanced strength and have additional wear rings to reduce oil leaks. The car body has increased baffle plate thickness for longer service life. Track link has increased thickness and larger bolt joints for better bolt retention. Track rollers have a larger shaft diameter to prevent bending and oil leaks and increase the 374's loading capacity, which means more reliable production for you.

HOW BAFFLE PLATES HELP YOU

Did you know baffle plates increase an excavator's strength-to-weight ratio? That's why Caterpillar incorporates the plates in high-stress areas like the boom, stick, and frame. More strength without adding significantly more weight means longer service life and faster, more efficient boom and stick response.

EXPECT UP TO 20% LOWER MAINTENANCE COSTS

WITH MORE UPTIME



NEXT GENERATION 374
6.5 OIL BARRELS

F SERIES
11 OIL BARRELS



NEXT GENERATION 374
104 FILTERS

F SERIES
180 FILTERS

SAVES YOU 20% IN MAINTENANCE

* OVER 12,000 SERVICE HOURS

The 374's extended and synchronized service intervals, along with reduced hydraulic oil capacity, mean you'll be able to spend more time working and up to 20 percent less in maintenance costs than the previous model.

The excavator is auto lube ready with built-in mounting points; an available auto lube retrofit kit provides additional hardware to mount a grease pump and line guards – all to make the job of lubing safer, cleaner, and trouble free.

KEY MAINTENANCE COST REDUCTIONS:

- + Fuel and engine oil filters accessible from the upper platform and synchronized to be changed at 1,000 hours.
- + Advanced air intake filter with double the dust holding capacity of the previous air intake filter.
- + New hydraulic oil filter with improved filtration and a 3,000 hour replacement interval – 50 percent longer than previous filter designs.
- + New high-efficiency hydraulic fan with programmable automatic reverse function to keep cores free of debris.
- + S•O•SSM ports for quick extraction of fluid samples and more simplified maintenance.

MAKE MANAGING EQUIPMENT EASIER

WITH CAT EQUIPMENT MANAGEMENT

Cat Equipment Management telematics technology helps take the complexity out of managing your jobsites by gathering data generated by your equipment, materials, and people and serving it up to you in customizable formats.

PRODUCT LINK™

Product Link collects data automatically and accurately from your assets – any type and any brand. Information such as location, hours, fuel usage, productivity, idle time, maintenance alerts, diagnostic codes, and machine health can be viewed online through web and mobile applications.

VISIONLINK

Access information anytime, anywhere with VisionLink – and use it to make informed decisions that boost productivity, lower costs, simplify maintenance, and improve safety and security on your jobsite. With different subscription level options, your Cat dealer can help you configure exactly what you need to connect your fleet and manage your business without paying for extras you don't want. Subscriptions are available with cellular or satellite reporting (or both).



Remote Services is a suite of technologies that improve your jobsite efficiency.

Remote Troubleshoot allows your Cat dealer to perform diagnostic testing on your connected machine remotely, pinpointing potential issues while the machine is in operation. Remote Troubleshoot ensures the technician arrives with the correct parts and tools the first time, eliminating additional trips to save you time and money.

Remote Flash updates on-board software without a technician being present, potentially reducing update time by as much as 50 percent. You can initiate the update when convenient, increasing your overall operating efficiency.



The **Cat App** helps you manage your assets – at any time – right from your smartphone. You can see your fleet location, hours, and other information you need, get critical alerts for required maintenance, and even request service from your local Cat dealer.

STAY COMFORTABLE WITH THE ALL-NEW CAB

Sites where excavators work are typically rugged and challenging. That's why it's important that the 374 cab protects the operator as much as possible from fatigue, stresses, sounds, and temperatures of the job.



SOUND-SUPPRESSED CAB

The cab is sound suppressed and sealed. All controls are located in front of the operator. Getting to critical information and settings is easy with the touchscreen monitor. Shortcut keys make it even easier and include two for entertainment and heating and air conditioning. There is also a shortcut key for apps and functions that you can set.

ALL-AROUND VISIBILITY

The windows give outstanding visibility to the work area. The polycarbonate roof hatch improves visibility above you. Dome and floor welcome lights automatically turn on when the door is opened. Rear and sideview cameras come standard, and a 360° Visibility feature that uses multiple cameras is also available to enhance jobsite safety.

NEW SEAT REDUCES FATIGUE

Comfort and efficiency of movement keep operators productive and alert all shift long. The new standard seat is wide and adjustable for operators of virtually any size. The Deluxe cab package includes a heated air suspension seat; the Premium seat is both heated and cooled. The tip-up console makes getting in and out of the seat easier than ever.

CONNECTIVITY AND STORAGE

Convenience features include Bluetooth® integrated radio, USB ports for charging and phone connectivity, 12V DC outlets, and an AUX port. Cup and bottle holders are easy to reach, and storage spaces are located conveniently throughout the cab.





TOUCHSCREEN MONITOR

Most machine settings can be controlled through the high-resolution touchscreen monitor. It offers 42 languages and is easy to reach from the seat – no twisting or turning.



NEW SMART MODE

Smart mode, one of three power settings, automatically adjusts engine and hydraulic power for the highest fuel efficiency – less power for tasks such as swinging and more power for digging. Operators can set and store their power mode preference using Operator ID; owners can lock in the mode they want their operators to use to help manage fuel consumption.



CUSTOMIZABLE JOYSTICKS

Joystick function can be customized through the monitor. Joystick pattern as well as response can be set to match operator preference.* All preferences are saved with the operator ID and restored at login. Make moving the excavator much easier with Cat Stick Steer. Simply push a button and use one hand to travel and turn instead of both hands or feet on levers or pedals.

*Not offered in all regions. Consult with your Cat dealer.



KEYLESS PUSH TO START

The 374 uses a keyless push-button engine start. This adds security for the machine by using Operator ID codes to limit and track machine access. Codes can be entered manually, via an optional Bluetooth key fob.



ENHANCE SAFETY

FOR YOU AND OTHERS

KEEP YOUR EXCAVATOR SECURE

Use your PIN code on the monitor, the optional Bluetooth key fob to enable the push-button starting feature.

AVOID TRIPPING

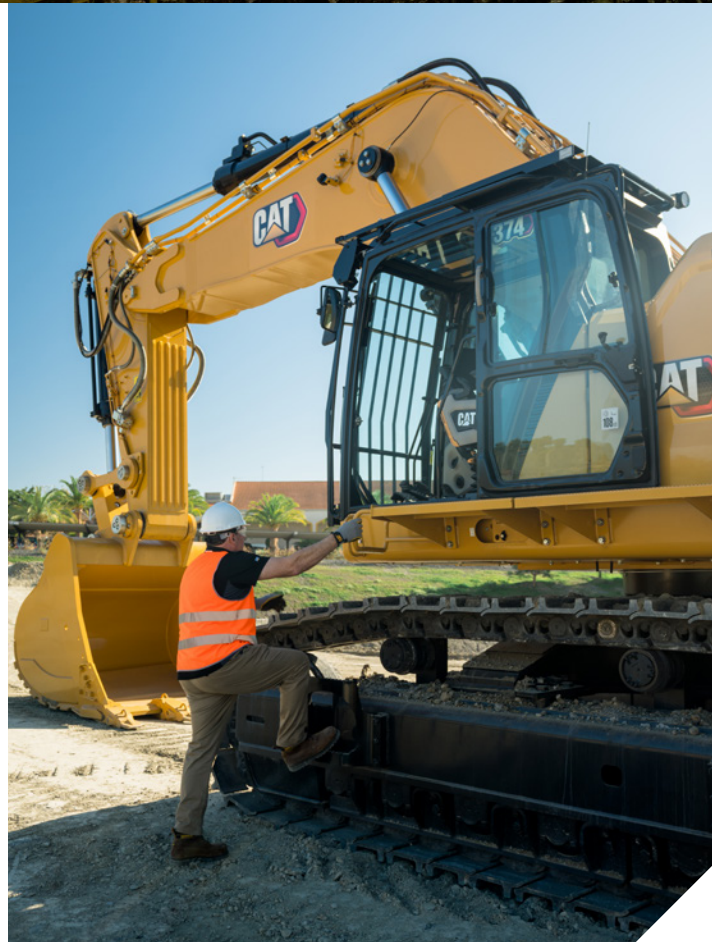
Serrated steps, anti-skid plating, and handrails help ensure you avoid slips and trips – a major contributor to workplace injuries.

AVOID TIPPING

Standard Lift Assist quickly calculates the actual load you are lifting and compares it to the rated load the excavator is capable of handling. Visual and auditory alerts tell you if you are within safe working range or need to take immediate action to avoid tipping.

ILLUMINATE THE JOBSITE

See all around the machine with the premium 360° lighting package. The 1800 lumen lights on the chassis, cab, boom, sides, and rear illuminate the jobsite for operators and ground personnel.





PROTECTION IN
ALL DIRECTIONS



E-WALL SWING



E-WALL FORWARD



E-WALL CAB PROTECTION



E-WALL CEILING



E-WALL FLOOR

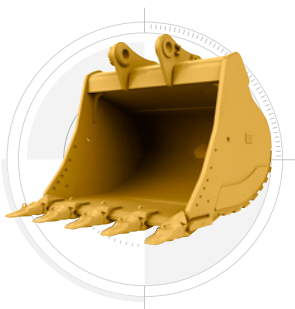
STANDARD 2D E-FENCE TECHNOLOGY

Whether you are using a bucket or a hammer, standard 2D E-fence automatically stops excavator motion using boundaries you set in the monitor for the entire working envelope – above, below, sides, and front. E-fence protects equipment from damage and reduces fines related to zoning or underground utility damage. Automatic boundaries even help prevent operator fatigue by reducing overswinging and overdigging.

INCREASE YOUR PRODUCTIVITY AND PROFIT WITH CAT ATTACHMENTS

You can easily expand the performance of your machine by utilizing any of the variety of Cat attachments. Each Cat attachment is designed to fit the weight and horsepower of Cat excavators for improved performance, safety, and stability.

BUCKETS



HYDRAULIC HAMMERS



PREVENT HAMMER WEAR AND TEAR

Protect your hammer from overworking. Auto hammer stop warns you after 15 seconds of continuous firing and then automatically shuts it off after 30 seconds – all to prevent wear and tear on the attachment and excavator.

QUICK COUPLERS



MULTI-PROCESSORS



SHEARS



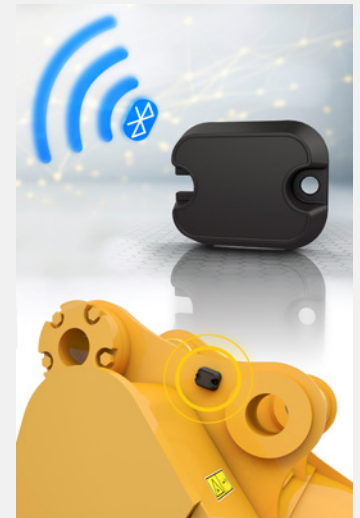
MORE THAN MACHINES

When you buy Cat equipment, you're getting so much more than the machine. You're also getting the support of a best-in-class dealer network backed by a range of flexible solutions, technology, tools, and more. It's all about support that's built around your success.

- Customer Value Agreements (CVA)
- Cost-saving service and repair options
- Quality parts and precision components
- Financing solutions
- Rental and used equipment

ATTACHMENT TRACKING MADE EASY

The Cat PL161 Attachment Locator is a Bluetooth device that makes finding your attachments and other gear quick and easy. The excavator's on-board Bluetooth reader or the Cat app on your phone will locate the device automatically.



Save more time and energy with the available work tool recognition feature. A simple shake of the attached tool confirms its identity; it also ensures all the attachment settings are correct so you can get to work quickly and efficiently.

TECHNICAL SPECIFICATIONS

See cat.com for complete specifications.

ENGINE		
Engine Model	Cat C15	
Engine Power – ISO 9249	358 kW	480 hp
Engine Power – ISO 14396	359 kW	481 hp
Bore	137 mm	5.39 in
Stroke	171 mm	6.73 in
Displacement	15.2 L	928 in ³

ISO 9249 is net power available at the flywheel when the engine is equipped with fan, air cleaner, muffler, and alternator with engine speed at 1,800 rpm.

HYDRAULIC SYSTEM		
Main System - Maximum Flow - Implement	896 L/min (x2 pumps)	237 gal/min (x2 pumps)
Maximum Pressure - Equipment - Implement	37 000 kPa	5,366 psi
Maximum Pressure - Equipment - Lift Mode	38 000 kPa	5,511 psi
Maximum Pressure - Travel	35 000 kPa	5,076 psi
Maximum Pressure - Swing	35 000 kPa	5,076 psi

SWING MECHANISM		
Swing Speed	6.5 rpm	
Maximum Swing Torque	298 kN·m	220,000 lbf·ft

WEIGHTS		
Operating Weight	74 000 kg	163,100 lb
• Mass boom, M2.57 (8'5") stick, XD 4.4 m ³ (5.75 yd ³) bucket, 650 mm (26") double grouser shoes, standard counterweight.		

SERVICE REFILL CAPACITIES		
Fuel Tank	920 L	243 gal
Cooling System	71 L	19 gal
Engine Oil (with filter)	62 L	16 gal
Swing Drive	20 L	5 gal
Final Drive (each)	32 L	9 gal
Hydraulic System (including tank)	620 L	164 gal
Hydraulic Tank (including suction pipe)	326 L	86 gal

DIMENSIONS		
Boom	Mass 7.0 m (23'0")	
Stick	Mass 2.57 m (8'5")	
Bucket	XD 4.4 m ³ (5.75 yd ³)	
Shipping Height (top of cab)	3559 mm	11'8"
Handrail Height	3982 mm	13'0"
Shipping Length (boom, stick, bucket installed)	12 978 mm	42'6"
Tail Swing Radius	4171 mm	13'8"
Counterweight Clearance	1494 mm	4'10"
Ground Clearance	782 mm	2'6"
Track Length	5873 mm	19'3"
Track Length to Center of Rollers	4705 mm	15'5"
Track Gauge – Extended	3410 mm	11'2"
Track Gauge – Retracted	2750 mm	9'0"
Transport Width – Extended – 650 mm (26") Shoes – Without Steps	4060 mm	13'3"
Transport Width – Retracted – 650 mm (26") Shoes – Without Steps	3400 mm	11'1"

WORKING RANGES AND FORCES		
Boom	Mass 7.0 m (23'0")	
Stick	Mass 2.57 m (8'5")	
Bucket	XD 4.4 m ³ (5.75 yd ³)	
Maximum Digging Depth	7240 mm	23'9"
Maximum Reach at Ground Level	11 470 mm	37'7"
Maximum Cutting Height	11 000 mm	36'1"
Maximum Loading Height	7050 mm	23'1"
Minimum Loading Height	3470 mm	11'4"
Maximum Depth Cut for 2440 mm (8'0") Level Bottom	7080 mm	23'2"
Maximum Vertical Wall Digging Depth	3710 mm	12'2"
Bucket Digging Force (ISO)	405 kN	91,090 lbf
Stick Digging Force (ISO)	352 kN	79,110 lbf

STANDARD & OPTIONAL EQUIPMENT

Standard and optional equipment may vary. Consult your Cat dealer for details.

BOOMS AND STICKS	STANDARD	OPTIONAL
7.0 m (23'0") Mass boom		•
7.8 m (25'7") Reach boom		•
2.57 m (8'5") Mass stick		•
2.84 m (9'4") Reach stick		•
3.0 m (9'10") Mass stick		•
3.6 m (11'10") Reach stick		•
4.67 m (15'4") Reach stick		•
CAB	STANDARD	OPTIONAL
High-resolution 203 mm (8") LCD touchscreen monitor	•	
High-resolution 254 mm (10") LCD touchscreen monitor		•
Heated seat with air-adjustable suspension (Deluxe only)	•	
Heated and cooled seat with automatic adjustable suspension (Premium only)	•	
Cat Stick Steer		•
CAT TECHNOLOGIES	STANDARD	OPTIONAL
Cat Product Link	•	
Cat Grade with 2D	•	
Cat Grade with Advanced 2D		•
Cat Grade with 3D		•
Cat Payload	•	
2D E-fence	•	
Lift Assist	•	
Remote Services Capability	•	
ELECTRICAL SYSTEM	STANDARD	OPTIONAL
Maintenance-free 1,400 CCA batteries (x2)	•	
Centralized electrical disconnect switch	•	
Chassis light	•	
LED boom and cab lights		•
ENGINE	STANDARD	OPTIONAL
Cold start block heaters		•
Three selectable modes: Power, Smart, Eco	•	
Automatic engine speed control	•	
Up to 4500 m (14,764 ft) altitude capability	•	
52°C (126°F) high-ambient cooling capacity	•	
-18°C (-0.4°F) cold start capability	•	
Hydraulic reverse fan	•	
Double element air filter with integrated precleaner	•	
Remote disable	•	
Biodiesel capability up to B20	•	

HYDRAULIC SYSTEM	STANDARD	OPTIONAL
Boom and stick regeneration circuit	•	
Electronic main control valve	•	
Dedicated closed loop swing circuit	•	
Heavy lift mode	•	
Automatic hydraulic oil warmup	•	
Automatic swing parking brake	•	
High performance hydraulic return filter	•	
Two speed travel	•	
Bio hydraulic oil capability	•	
Advanced tool control		•
Medium-pressure auxiliary circuit		•
Quick coupler circuit		•
SAFETY AND SECURITY	STANDARD	OPTIONAL
Caterpillar One Key security system	•	
Lockable external tool/storage box	•	
Lockable door, fuel, and hydraulic tank	•	
Lockable fuel drain compartment	•	
Service platforms with anti-skid plate	•	
RH handrail and hand hold	•	
Mirror package	•	
Signaling/warning horn	•	
Ground-level secondary engine shutoff switch	•	
Rearview and right-side-view cameras	•	
360° visibility		•
Boom lowering check valve		•
Stick lowering check valve		•
SERVICE AND MAINTENANCE	STANDARD	OPTIONAL
Auto lube ready	•	
Grouped location of engine oil and fuel filters	•	
Scheduled Oil Sampling (S•O•S) ports	•	
QuickEvac™ maintenance ready		•
Electric refueling pump with auto shutoff		•
UNDERCARRIAGE AND STRUCTURES	STANDARD	OPTIONAL
Long variable gauge undercarriage	•	
Towing eye on base frame	•	
Standard counterweight	•	
Counterweight with removal device		•
650 mm (26") HD double grouser track shoes		•
750 mm (30") HD double grouser track shoes		•
900 mm (35") HD double grouser track shoes		•

Not all features are available in all regions. Please check with your local Cat dealer for specific offering availability in your area.
For additional information, refer to the Technical Specifications brochures for the 374 available at www.cat.com or your Cat dealer.



For more complete information on Cat products, dealer services and industry solutions, visit us on the web at www.cat.com.

VisionLink is a trademark of Trimble Navigation Limited, registered in the United States and in other countries.

Materials and specifications are subject to change without notice. Featured machines in photos may include additional equipment. See your Cat dealer for available options.

©2021 Caterpillar. All Rights Reserved. CAT, CATERPILLAR, LET'S DO THE WORK, their respective logos, Product Link, S•O•S, "Caterpillar Corporate Yellow", the "Power Edge" and Cat "Modern Hex" trade dress as well as corporate and product identity used herein, are trademarks of Caterpillar and may not be used without permission.

www.cat.com www.caterpillar.com

AEXQ2925-01
Replaces: AEXQ2925-00
Build Number: 07B
(Afr-ME, CIS, Hong Kong,
Taiwan, India, Indonesia, S
Am, Pacific Islands,
SE Asia, Turkey)

