

PScale 10-T

Compact scaler with hydraulic hammer for use in underground mining



- Best price / performance ratio
- Largest scaling coverage in its class
- Sensitive control
- Comfort cab
- Ultra-compact design

Technical data

6121-00-000 - 12.02.2025

Definition of option / optional equipment

In the following, the selectable equipment of the machine is identified by the terms "option" or "optional equipment."

The option describes equipment that can be selected in addition to the standard machine. The optional equipment describes equipment that replaces other equipment on the machine.

Main features of the machine

Compact scaler with hydraulic hammer for use in underground mining
Working height, maximum 10.0 m

Safety equipment

All machines are designed and manufactured in accordance with the applicable legal requirements.

They offer a correspondingly high level of safety for users.

Some safety equipment at a glance:

- ROPS/FOPS certification
- Battery master switch, lockable
- EMERGENCY STOP button: 1x in driver's platform, 1x outside
- Engine start warning with start delay
- Audible reversing signal
- 3-point safety entry
- Emergency exit
- Entrances and exits, slip-resistant and color-contrasting
- Articulated frame lock

In case of driver absence, this is done automatically:

- The drive shifts to neutral
- Activation of the parking brake

Operating conditions

Permitted environment temperature * -20 °C to +50 °C

* Observe the cold-start limit temperature of the engine

Permitted longitudinal gradient, maximum 35 %

Operating altitude without reduction in power, maximum < 1,500 m

Weights and loads

Operating weight * 16,000 kg

Permitted attachment weight, maximum 400 kg

Permitted front axle load, maximum 11,500 kg

Permissible rear axle load, maximum 8000 kg

* Depending on selected options and optional equipment

Chassis

Swivel angle, maximum ±8°

- Divided chassis with articulated steering
- Fixed front axle and oscillating rear axle
- Automatic lock function of the oscillation by swiveling the boom

Engine

Diesel engine CATERPILLAR C4.4

Manufacturer CATERPILLAR

Type C4.4

Emissions stage EU Stage III A

Emissions stage USA EPA Tier 3

Output 96.5 kW

At speed 2,200 rpm

Alternator 28 V

100 A

Starter motor 24 V

4.5 kW

Cold start limit temperature -15 °C

- Catalytic converter with measuring points
- Fuel prefilter and fuel fine filter with water separator
- Manual fuel feed pump
- Dry air filter with pre-filter

Engine (optional equipment)

DEUTZ TCD 2012 L04 2V diesel engine

Manufacturer DEUTZ

Type TCD 2012 L04 2V

Emissions stage EU Stage III A

Emissions stage USA EPA Tier 3

Output 93 kW

At speed 2,400 rpm

Technical data

6121-00-000 - 12.02.2025

Alternator	28 V
	80 A
Starter motor	24 V
	4 kW
Cold start limit temperature	-15 °C

- Catalytic converter with measuring points
- Fuel prefilter and fuel fine filter with water separator
- For fuels with sulfur content < 50 mg/kg
- Manual fuel feed pump
- Dry air filter with pre-filter

Diesel engine DEUTZ TCD 4.1 L4

Manufacturer	DEUTZ
Type	TCD 4.1 L4
Emissions stage EU	Stage V
Emissions stage USA	EPA Tier 4F
Output	105 kW
At speed	2,200 rpm
Alternator	28 V
	100 A
Starter motor	24 V
	4 kW
Exhaust gas aftertreatment	DOC
	DPF
	SCR
Cold start limit temperature	-15 °C

- Fuel prefilter and fuel fine filter with water separator
- For fuels with sulfur content < 10 mg/kg
- Manual fuel feed pump
- Dry air filter with pre-filter

Fuel system

Fuel tank capacity	140 l
--------------------	-------

- Electrical fill level indicator
- Shut-off valve to protect against fuel leakage in case of hose rupture

Travel drive

Forward speed, maximum	18 km/h
Reverse speed, maximum	18 km/h
Tractive force, maximum	80 kN
Gradeability, maximum	40 %

- Hydrostatic propel drive
- Drive reversible under load
- All-wheel drive

Axes

Manufacturer	DANA
Front axle type	123
Front axle differential	100 %
Rear axle type	123
Rear axle differential	100 %

Service brake

- Hydraulic foot brake as 2-circuit external force brake system
- Oil-immersed multi-disk brakes

Parking brake

- Spring-applied, hydraulically released (SAHR)
- Hand pump to release the brake in case of system failure

Emergency brake

- One circuit of the service brake

Tires

Tire size	12.00x20
Tire filling	PUR

Steering

- Hydraulic articulated steering with a double-acting cylinder
- Steering wheel
- Emergency steering

Hydraulics

1. Hydraulic tank capacity	80 l
2. Hydraulic oil tank capacity	100 l
Operating pressure	200 bar

- Two separate hydraulic circuits, for hammer hydraulics and travel drive/working hydraulics
- Load sensing, electro-hydraulically pilot-controlled
- Inspection glasses for min/max indication
- Electrical fill level indicator
- Electrical filter monitoring
- All fittings as JIC version
- All hydraulic motors and pumps in cast iron
- Hand pump for filling the hydraulic tanks

Technical data

6121-00-000 - 12.02.2025

- Hand pump for tilting the cabin for maintenance work
- Hydraulic oil ATF

Electrics

Supply voltage	24 V
Number of batteries	2 pcs.
Battery voltage	12 V
Battery charge	110 Ah

Electrics (optional)

- Jump start socket
- Enhanced sealing of the connectors with grease filling and sealing tape

Compressed air system

- Piston Compressor
- Compressed air reservoir
- Air pressurization of hammer case to avoid contamination

Lighting

All headlights and lamps as LED variants:

- Two headlights for road illumination, one each for low and high beam
- Two rear tail lights, with reversing light, parking light, brake light and turn signals
- Two lights at the front, with parking light and turn signals
- Four front headlights for working area
- Four rear headlights
- Two working lights on the telescopic boom
- Two yellow strobes

Lighting (optional equipment)

- Two red strobe lights
- Two blue strobe lights

Lighting (options)

- two additional working lights on the front of the driver's compartment
- Rear working lights active while reversing
- Two driving direction lights red / green

Driver's platform

Closed cab

- Heating with ventilation and filter
- Sliding windows right and left
- Wiper/washer system for front and rear window
- Interior lighting
- Document box
- Two exterior mirrors
- All driving-relevant switches and actuations located within reach of the operator
- Safety glass in front
- Folding grille guard for windshield
- Hydraulically tilting for ideal view of the attachment
- Hydraulic hammer operation with foot switch or joystick
- Adjustable hammer interval time and impact frequency
- Driver display 4.3"

Diagnostic display 4.3"

- Active faults and fault history
- Parameter changes with authorization levels
- Miscellaneous engine data and operating data

Driver's seat

- Lap belt
- Head rest
- synthetic leather cover
- Adjustable backrest and seat cushion
- Mechanical suspension

Driver's stand (optional equipment)

- Two heated exterior mirrors
- Driver display 7"
- 3-point seat belt of driver's seat *
- Air suspension *

* Only in combination

Driver's platform (optional)

- Air conditioning
- Rear view camera system
- Return signal acknowledgeable
- Brake test function
- Hill start assist with automatic release / engagement of the parking brake
- Radio with USB port
- Inclination bar on display
- Driver's seat contact switch
- Driver's seat belt contact switch

Technical data

6121-00-000 - 12.02.2025

Turret and telescopic boom

- Lift cylinder with lowering brake valves
- Telescopic boom with two stages
- All bearings are made of wear-resistant material
- Robust wiper to protect telescopic boom against dirt
- Rock protector at the boom to protect hydraulic fittings
- Rock deflector on top of the boom

Front dozer blade

- hydraulic lift
- hoisting unit protected against falling rocks

Work equipment (optional equipment)

NPK PH-2TS hydraulic hammer

Manufacturer	NPK
Type	PH-2TS
Operating weight	260 kg
Minimum impact frequency	500per minute
Maximum impact frequency	1,200per minute

- Central lubrication system for hydraulic hammer
- Extra long pointed chisel
- Spezial hydraulic hammer for scaling operation

EPIROC SB 202 T hydraulic hammer

Manufacturer	EPIROC
Type	SB 202 T
Operating weight	199 kg
Minimum impact frequency	1,250per minute
Maximum impact frequency	1,700per minute

- Central lubrication system for hydraulic hammer
- Pointed chisel

EPIROC SB 302 T hydraulic hammer

Manufacturer	EPIROC
Type	SB 302 T
Operating weight	315 kg
Minimum impact frequency	950per minute

Maximum impact frequency 1,250per minute

- Central lubrication system for hydraulic hammer
- Pointed chisel

Work equipment (optional)

Dust suppression system

Water tank capacity 130 l

- Water pump
- Flat spray nozzle on hydraulic hammer

Front supports

- Hydraulic telescopic outriggers
- Right and left fixed to the front of the vehicle
- Vertically extending
- Lowering brake valves in the hydraulic cylinders

Mechanical quick-change system

- For different varieties of attachments
- Mounting plate with mechanical lock

Shock absorption system

- Vibration damping system, automatic / deactivating

Fire protection

- Handheld fire extinguisher (TOTAL) with 9 kg of dry extinguishing agent

Fire protection (optional equipment)

- HRD fire-extinguishing system (PROTECFIRE) with manual release and dry extinguishing agent
- HRD fire-extinguishing system (PROTECFIRE) with automatic release and dry extinguishing agent
- HRD fire-extinguishing system (ANSUL) with manual release and liquid agent
- HRD fire-extinguishing system (ANSUL) with automatic release and liquid agent
- Portable fire extinguisher (ANSUL) with 7.7 kg of dry extinguishing agent

Paintwork

Color RAL 1007 / 7016

Accessories

- Two wheel chocks
- Two triangular safety reflectors
- Tool kit with bag
- Safety helmet and ear protection
- First aid kit

Accessories (options)

- Spare wheel
- Central lubrication system on basic vehicle
- Plug-in pre-fittings for remote control
- Remote control

Documentation

- A printed operating manual in the local language in the document box
- Operating instructions, spare parts list and wiring diagrams in electronic form via online access

Documentation (optional)

- An additional operating manual in local language, in printed form, included with the machine
- A spare parts list in local language or English, in printed form

Machine software

- Software user interface language executed in national language

Maintenance packages (optional equipment)

- Service package, 2000 operating hours
- Service package, 3000 operating hours
- Service package, 5000 operating hours

PAUS CONNECT CLOUD (optional)



The PAUS CONNECT CLOUD collects and visualizes data, messages or location information of the machine. The data is transmitted to the cloud using a built-in telemetric unit.

Your advantages:

- Faster service
- Life cycle cost management
- data transmission via existing WLAN and/or mobile phone networks
- intermediate storage of all data in the absence of connectivity (up to 30 days)
- Access to the PAUS CONNECT CLOUD
- remote diagnosis/remote maintenance
- statistical application evaluation
- vibrational monitoring
- individual evaluations and statistics

Customer Service

Repair work and maintenance work are central points in customer care. Here, PAUS is broadly positioned and offers its customers and dealers worldwide an extensive service program. Trained employees are available on our service hotline, as are competent contacts at our local dealers.

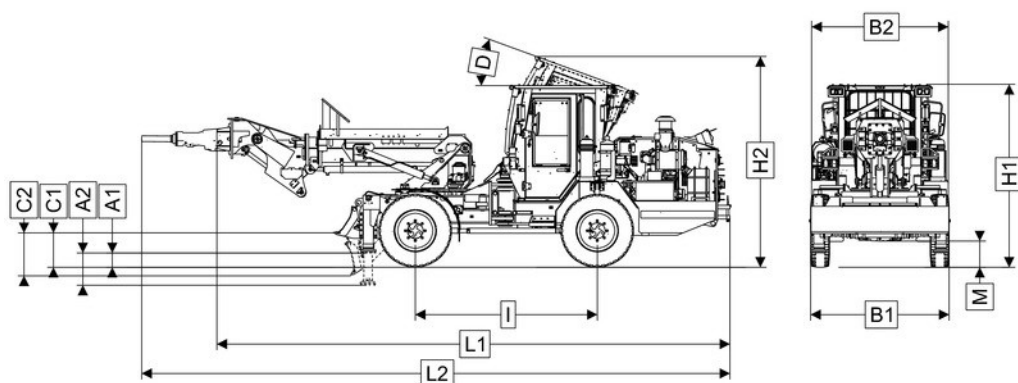
Spare parts

We attach great importance to a high level of availability of PAUS spare parts. In addition to maintenance and service parts, which are available at any time, customers and dealers are able to purchase spare parts for engines, axles, transmissions, etc. easily and quickly through us. Benefit from our online catalog with refined spare parts lists.

Technical data

6121-00-000 - 12.02.2025

Dimensions



844492-04
PR00100-01
PR00032-02

The illustration may not match the scope of delivery

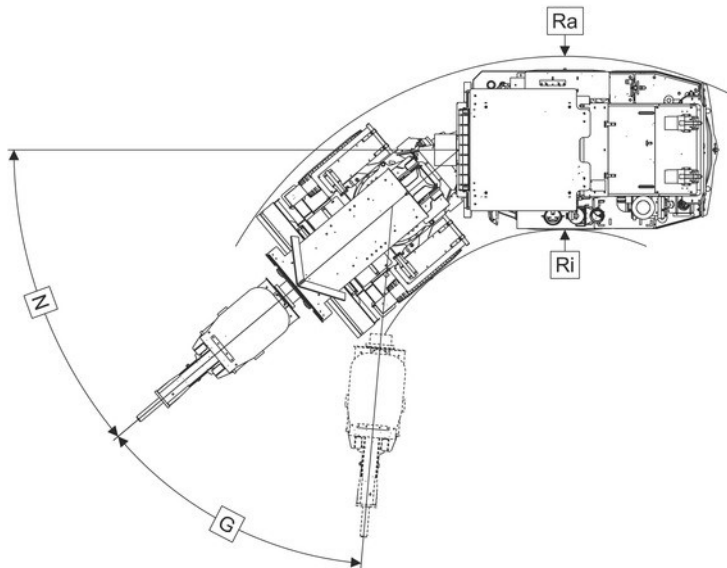
Dimension	Note	Value	Unit
A1	Front supports *	260	mm
A2	Front supports *	595	mm
B1		2290	mm
B2		2405	mm
C1		455	mm
C2		555	mm
D		20	°
H1		2715	mm
H2		3105	mm
I		2900	mm
L1		8905	mm
L2	Mechanical quick-change system *	8780	mm
	NPK PH-2TS hydraulic hammer (without chisel) *	9595	mm
	EPIROC SB 202 T hydraulic hammer (without chisel) *	9435	mm
	EPIROC SB 302 T hydraulic hammer (without chisel) *	9515	mm
M		385	mm

* Optionally

Technical data

6121-00-000 - 12.02.2025

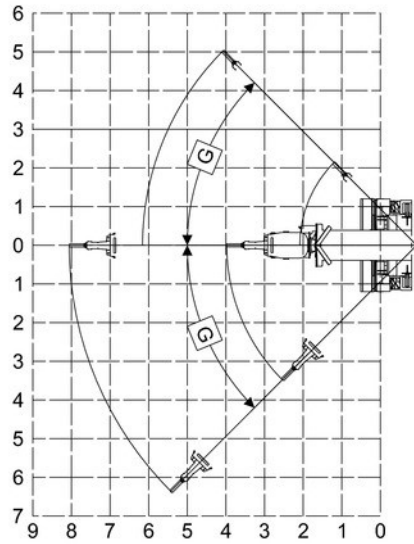
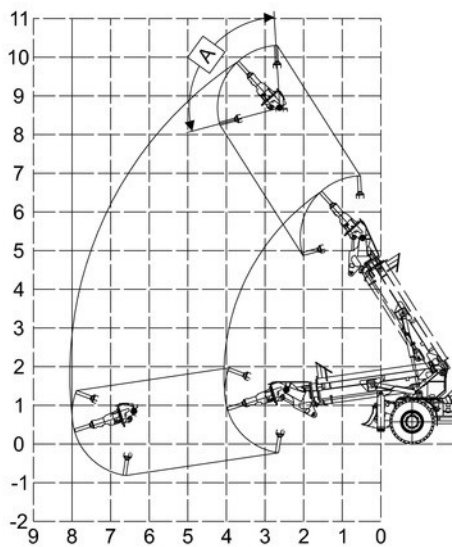
Turning radius



The illustration may not match the scope of delivery

Dimension	Note	Value	Unit
N	Steering angle, maximum	40	°
G		45	°
Ri		2800	mm
Ra		5360	mm

Hydraulic hammer work area



PR00032-02

The illustration may not match the scope of delivery

Dimension	Note	Value	Unit
A		100	°
G		45	°

